



Renders are for indicative purposes only and standard façade is included in base price.



 4
  2
  2



Living: 209.7m² = 22.6sq

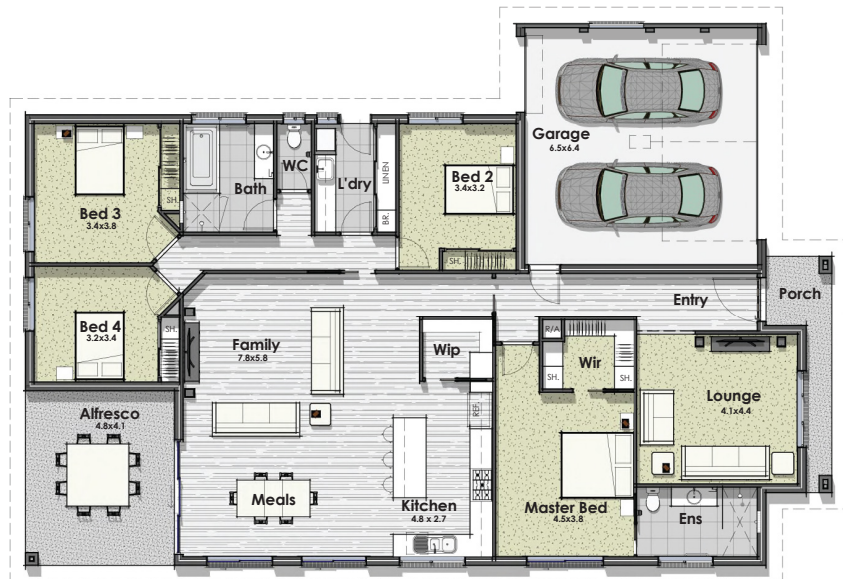
Garage: 44.4m² = 4.8sq

Porch: 6.7m² = 0.7sq

Alfresco: 19.6m² = 2.1sq

Total: 280.3m² = 30.2sq

 14.77m
 22.6m



Michelle Brown | 0422 599 866 | michelle@alatalobros.com.au

Leisa Robb | 0421 670 959 | leisa@alatalobros.com.au